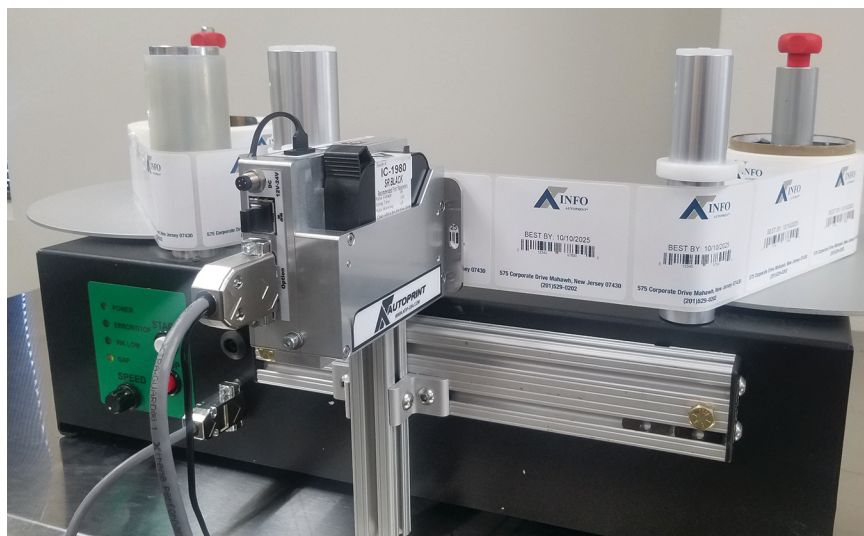


AUTOPRINT® Reel-to-Reel Label Printer



The AUTOPRINT® Reel-to-Reel Label Printer provides an ideal table-top platform for coding labels just-in-time using a Markoprint thermal inkjet coder. The reel-to-reel mechanism allows you to simultaneously print, count and rewind label stock. The system easily prints date codes, lot/serial numbers, barcodes and logos.

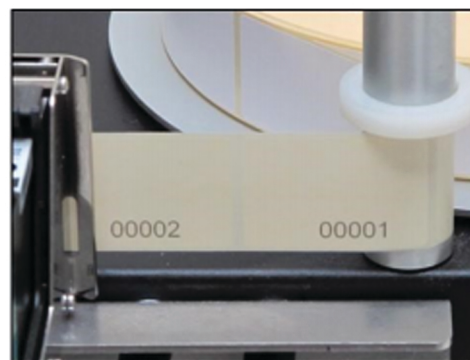
Features & Specs

- Print text, barcodes and variable counters
- Secured DB-9 printhead connector
- Encoder output: 0-1 SV square wave
- Universal PS-160 power adapter included
- Linear rewind speed of LS model varies with roll diameter and weight
- Overall dimensions (HWD): 40"x 16"x 18"
- 3-Year parts and labor limited warranty



Markoprint X1Jet

- Highly compact design
- Built in controller & photo eye
- Printing height up to 12.5mm
- Water & solvent based inks
- Enabled for bulk supplies



Variable Counting