

Technical data Autoprint X1JET LX

System X1JET LX	Print	Basic	Advanced	Pro
maximum speed at 300 dpi	30 m per minute	30 m per minute	60 m per minute	90 m per minute
maximum resolution				
- horizontal	50 to 900 dpi	50 to 900 dpi	50 to 900 dpi	50 to 900 dpi
- vertical	300 dpi	300 dpi	300 / 600 dpi	300 / 600 dpi
Print/character height	0.8 bis 12.5 mm	0.8 bis 12.5 mm	0.8 bis 12.5 mm	0.8 bis 12.5 mm
maximum text length	1 000 mm	1 000 mm	1 000 mm	2 000 mm
No. of text memories	9 texts	9 texts	9 texts	9 texts
Text field	✓	✓	✓	✓
Counter	-	-	✓	✓
Date field/time	-	✓	✓	✓
Date offset	-	-	✓	✓
Action field	-	-	✓	✓
Logos	✓	✓	✓	✓
Barcodes	-	-	✓	✓
2D-Codes	-	-	-	✓
Data transfer by				
USB stick	✓	✓	✓	✓
Ethernet	✓	✓	✓	✓
Web interface	✓	✓	✓	✓
EIA-232	✓	✓	✓	✓
Internal sensor	✓	✓	✓	✓
External sensor	✓	✓	✓	✓
Encoder	✓	✓	✓	✓
I/O	2I / 4O	2I / 4O	2I / 4O	2I / 4O
Ink status display	LED	LED	LED	LED
Spitting	✓	✓	✓	✓
Warming	✓	✓	✓	✓
Printing examples in original size	Ab12	#092013648 12.08.2015		

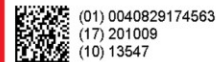
Technical changes reserved.



Inkjet coder

Autoprint X1JET LX

Print
Basic
Advanced
Pro



LEXMARK



AT Information Products, Inc.
575 Corporate Drive, Mahwah, NJ 07430
Phone: 201-529-0202 · Fax 201-529-5603 · www.atip-usa.com

Super compact thermal inkjet Coder (TIJ)

Autoprint X1JET LX is based on reliable Autoprint X4JET technology. This compact and powerful system is available in different, upgradable system versions. Autoprint X1JET LX is designed for different range of applications i.E. food & beverage, chemical, coated/uncoated materials, timber and the pharmaceutical industry. The small & compact integrated controller/printer comes in a single unit. The innovative system codes smooth absorbent and semi-absorbent surfaces - quickly, accurately and reliably.

- Innovative technology for printing information directly onto cartons
- High availability through cartridge technology, tested and proven a million of times
- High quality, high resolution printing based on twin nozzle row
- Automatic ink type recognition and filling level control
- Highly resistant to static discharge
- Up to 10 mm distance from product

Easy to use

No training necessary: printing with the Autoprint X1JET LX is simple, due to 3-logic intuitive operation with LED status light. Data transmission is initialized with USB stick/interface.

- User friendly due to 3-logic
- Select and print directly 9 layouts/labels

Universal and flexible use

Autoprint X1JET LX uses True Type fonts for printing. All conventional 1- and 2-dimensional codes* can be printed. The controller is fully integrated into the print module.

- Highly compact design (see also picture in original size)
- Simple integration into packaging systems and conveyors for printing from the side or top
- No separate photo sensor required for triggering/initializing the printing process – Built in photo sensor already in the system unit (external signal input optional)
- Printing height up to 12.5 mm

Control

Different performing system versions are available, with different functional features, depending on application requirements: Print, Basic, Advanced and Pro. The system X1JET LX allows data transmission via USB stick. Each controller has a network connection (LAN) or a standard EIA-232 interface. Print layouts are created with iDesign software.

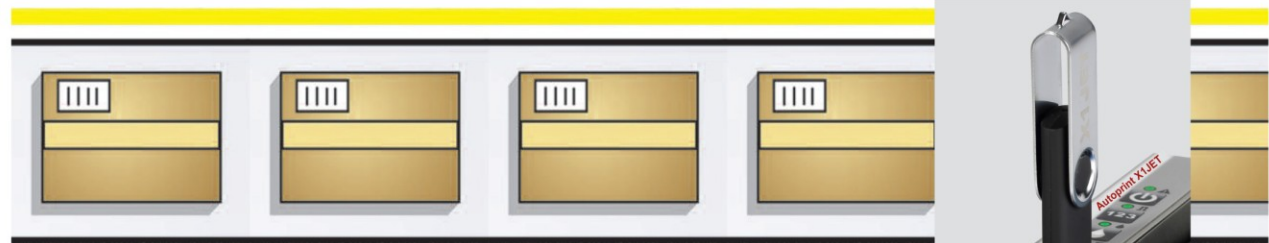
- Data transfer using USB stick
- Data transfer connecting Ethernet and EIA-232
- Data transfer connecting to Options interface (printing communication from PLC or external photosensor)
- Data transfer enabling Web interface

Wide range of standard accessories

- Rotary/Shaft encoders, for different dynamically adapting conveyor speeds
- Flexible bracket for varying product
- Mounting brackets for use horizontally and vertically

Wide ink range

A wide range of water-based inks to satisfy many applications. Absorbent surfaces are marked permanently, with excellent resolution. A diversity made possible only through the use of fast interchangeable cartridge systems.



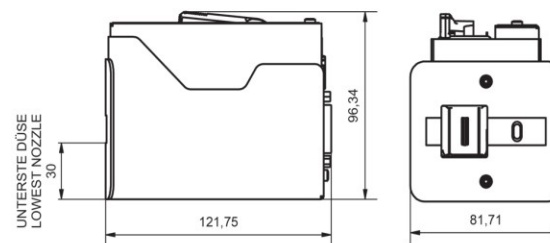
Autoprint X1JET LX
Compact, independently operating printhead for simple integration into existing production lines.



3-Logic User Interface
LED indicators for intuitive use



Picture of original size!



Dimension drawing technical data

*depending on version



LX cartridge
Perfect print quality through Dual-Channel nozzle technology



USB stick data transfer
Dynamically transfers Data created with a PC to the printer



Ethernet
Data transfer from networks and Web interface



Interface options
Direct Connection of rotary encoder, sensor and status outputs